

NO4°10'00"E 147.46'

DEED BOOK 2881 PAGE 325

20' WIDE DRAINAGE EASEMENT

LOT 8

LOT 7 - BLOCK 10515
81.534 S/F - 1.87 ACRES (TOTAL)

LOT 8.03

515.30'

LOT 8.02

LOT 8.01

N85°14'00"W

LOT 9

METZLER PLACE

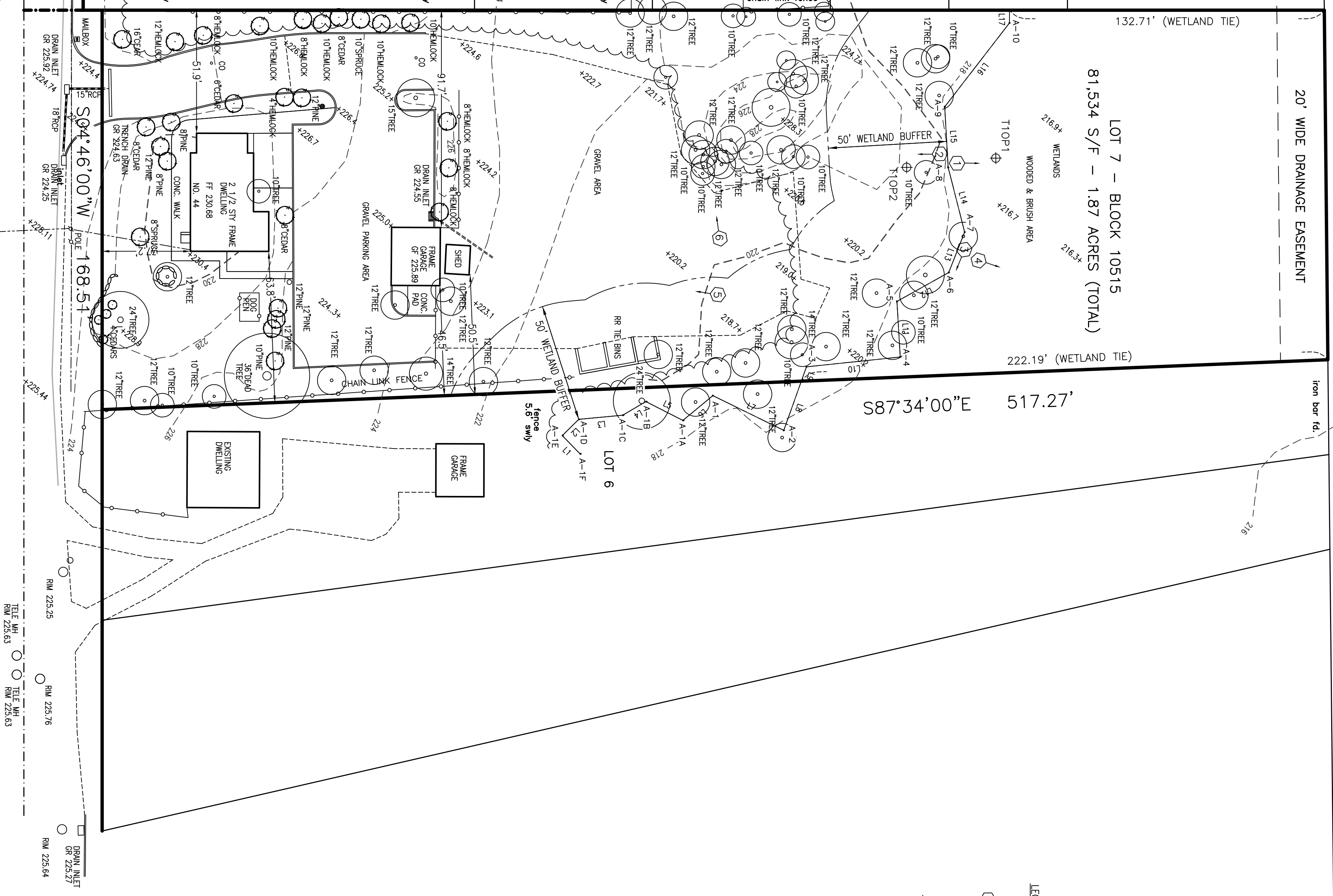
LOT 10

P.Q.B.

155.00'

PLAINFIELD ROAD

ROAD



- LEGEND
- DENOTES PHOTOGRAPH LOCATION AND DIRECTION
 - DENOTES TRANSECT WITH OBSERVATION POINTS

WETLANDS BOUNDARY LINE TABLE		
LINE #	DIRECTION	LENGTH
L1	S39°27'20"E	10.77'
L2	S01°17'20"W	9.75'
L3	S89°26'55"W	18.65'
L4	S64°10'05"W	11.35'
L5	N56°09'20"W	17.52'
L6	S55°09'55"W	16.39'
L7	N59°12'25"W	33.30'
L8	S24°23'25"W	22.04'
L9	S24°23'25"W	6.37'
L10	S88°42'50"W	39.76'
L11	S01°24'05"W	23.49'
L12	S65°39'00"W	25.01'
L13	S26°11'30"W	18.31'
L14	S09°31'15"E	28.18'
L15	S01°32'25"W	25.60'
L16	S42°25'05"W	44.69'
L17	S04°46'00"W	5.39'

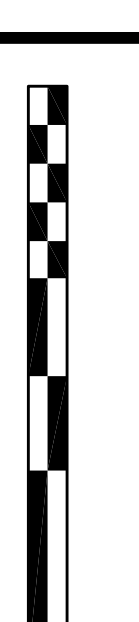
NOTE:
THE STATE OF NEW JERSEY HAS DETERMINED THAT ALL OR A PORTION OF THIS LOT LIES IN AN UNDESIGNATED WETLANDS AREA. PER NJAC 7:27, ANY PROPOSED DEVELOPMENT OR CONSTRUCTION ON THIS SITE OR ANY PART THEREOF SHALL REQUIRE FRESHWATER WETLAND PERMITS FROM THE DIVISION OF LAND USE REGULATION AT (609) 292-0860 OR [HTTP://WWW.NJ.GOV/LANDUSE](http://www.nj.gov/landuse) FOR MORE INFORMATION PRIOR TO ANY CONSTRUCTION ONSITE.

DRAWN BY: SP
CHECKED BY: WGH

JOB No. 02-079

BOOK

SCALE 1" = 30'



DATE JUNE 13, 2019

REVISIONS NOVEMBER 19, 2019 WETLANDS

NOTES

CERTIFICATE OF AUTHORIZATION No. 240627959700

Murphy & Hollows Associates LLC
CIVIL ENGINEERING AND SURVEYING
192 CENTRAL AVENUE, STURGIS, NJ 07980
PHONE: (609) 251-2255 FAX: (609) 251-2256
WWW.MURPHYANDHOLLOWSONLINE.COM

WETLANDS LOCATION
MAP OF
LOT 7
BLOCK 10515
44 PLAINFIELD ROAD
LONG HILL
MORRIS COUNTY
NEW JERSEY

AIDAN T. MURPHY
N.J. LIC. PROFESSIONAL ENGINEER #21319
1979-2018

WILLIAM G. HOLLOWES
N.J. LIC. PROFESSIONAL ENGINEER
N.J. LIC. PROFESSIONAL PLANNER #2530

FILE LF02-079 SHEET 1 OF 1